



SAMPLE DETAIL SHOWN FOR COLOUR REFERENCE

# LILLE



30 METRE NON REPEAT  
DESIGN  
Scale: 1:10

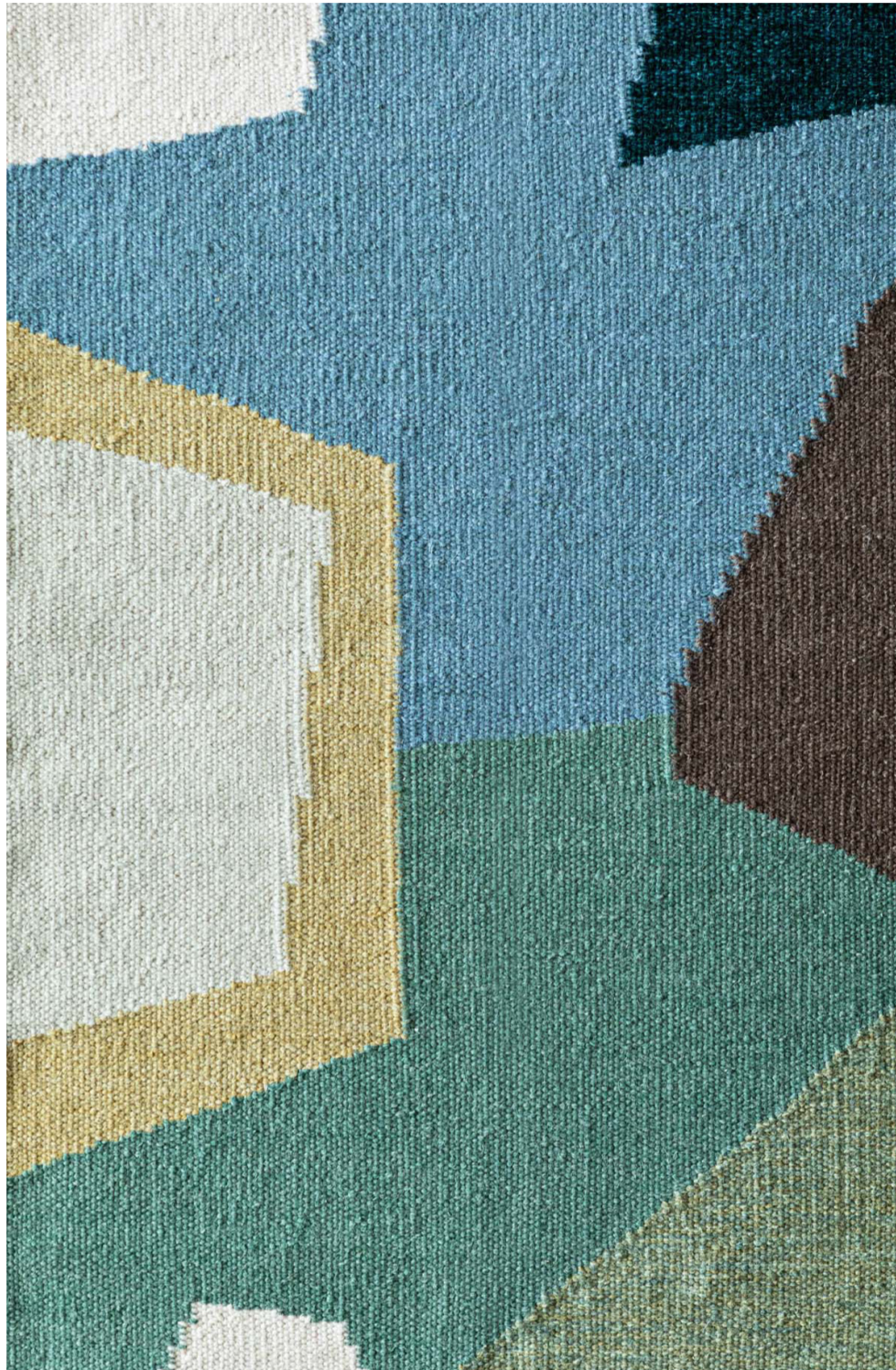
Studio 6A, South Park Studios,  
88 Peterborough Rd,  
London, SW6 3HH

NO  
STRAIGHT  
LINES BY K&H  
DESIGN

T: +44 (0) 207 7363 610

E: [no.straight.lines@kandhdesign.co.uk](mailto:no.straight.lines@kandhdesign.co.uk)

W: [kandhdesign.co.uk/no-straight-lines](http://kandhdesign.co.uk/no-straight-lines)



LILLE

22 - LT HT

## Stair Runner

**Design:** Any section from the 30m non repeat design can be selected for your stair runner.

**Dimensions :** Stair runners are offered in widths of 70cm, 90cm and 120cm.

**Material:** The flat weaves are 100% New Zealand wool with no mixed fibres.

**Sustainability:** There is no backing so our stair runners are biodegradable.

**Stockist:** Peter Page **W:** [peterpage.com](http://peterpage.com) **E:** [hello@peterpage.com](mailto:hello@peterpage.com)